

# Fiberglass Utility Markers

## Flexible Markers for Buried Utilities

### FLEX-TOUGH

Our newest marker is specially designed with a thicker middle section for easier installation into hard soil surfaces. This marker is perfect for applying decals on both sides.

Colors - White, Brown, Yellow, Orange, Red, Blue, Green and Purple

### DUAL-FLEX

Because of its increased flexibility and flat area on both sides, the Dual-Flex marker is used primarily on trails and secondary roads where two direction marking is required.

Colors - White and Yellow

### Specifications

Lengths - 62", 66" & 72" are standard. Custom lengths are available but may require a longer lead time.

Material - Fiberglass Reinforced Composite

Length	Flex-Tough	Dual-Flex
62"	FT-62-__	DF-62-__
66"	FT-66-__	DF-66-__
72"	FT-72-__	DF-72-__

Color Codes - add at the end of the part number:  
 00 = White, 01 = Brown, 02 = Yellow, 03 = Orange  
 04 = Red, 05 = Blue, 06 = Green, 07 = Purple



### Benefits:

- Lightweight flat style marker
- Quick Installation
- Withstands ditch burns, vehicle impacts and years of outdoor exposure
- Available in many colors and sizes

### Mechanical Properties

Tensile Strength - 75,000 p.s.i.  
 Compressive Strength - 50,000 p.s.i.  
 Flexural Strength - 60,000 p.s.i.  
 Flexural Modulus - 3,300,000

Temperature Resistance -80°F to +160°F

Weight % Glass Reinforcement - 60%

## FLEXCAT™ TEST STATION

Modified version of the FlexTough™ marker that continues to provide flexibility and impact resistance while serving as a two terminal cathodic protection test station

Comes standard with 1 custom decal and 1 standard cathodic protection decal (B238ETS)

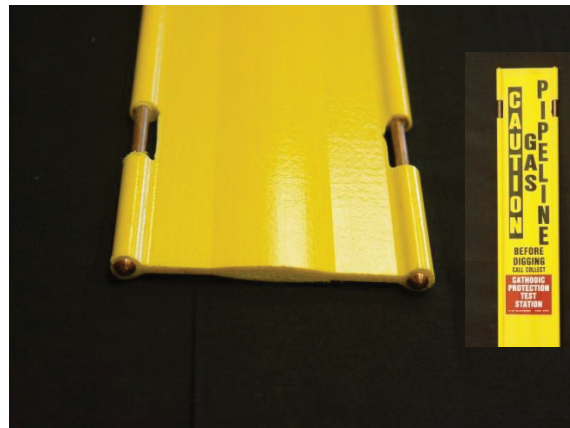
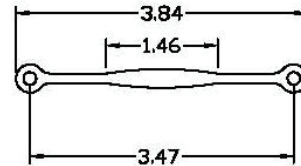
Includes 2 copper test terminals and anchor

12 gauge wire is optional and can be installed at the plant at no additional charge

Standard lengths: 62", 66", 72"

Color Options: (02) Yellow

10 PIECES PER CASE



## TRACERFLEX™ TEST STATION

Same modified version of the FlexTough™ marker that continues to provide flexibility and impact resistance while serving as a two terminal line locating test station

Comes standard with 1 custom decal and 1 standard line tracing decal (B2580TOF)

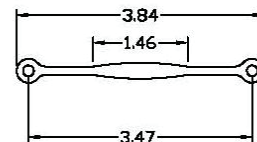
Includes 2 copper test terminals and anchor

12 gauge wire is optional and can be installed at the plant at no additional charge

Standard lengths: 62", 66", 72"

Color Options: (05) Blue, (06) Green

10 PIECES PER CASE





## ENHANCEMARK UTILITY MARKER

This 2 piece marker consists of 3.5" round post with a 3.8" domed enhancer top, Made of HDPE

Comes standard with 2 custom decals and plastic T anchor

Allows for 360° visibility by adding a 3<sup>rd</sup> decal to enhancer top

Recommended for use in areas with lower impact rate

Standard lengths: 66", 72", 78"

Post Color Options: (00) White, (02) Yellow, (03) Orange

Enhancer Color Options: (00) White, (02) Yellow, (03) Orange, (04) Red, (05) Blue, (06) Green, (07) Purple

\*Enhancer available separately

10 PIECES PER CASE



## ENHANCEMARK TEST STATION

Consists of the Enhancemark with a 5 terminal test station and cap installed

Made of HDPE & comes standard with 2 custom decals and plastic T anchor

Allows for 360° visibility by adding a 3<sup>rd</sup> decal to enhancer

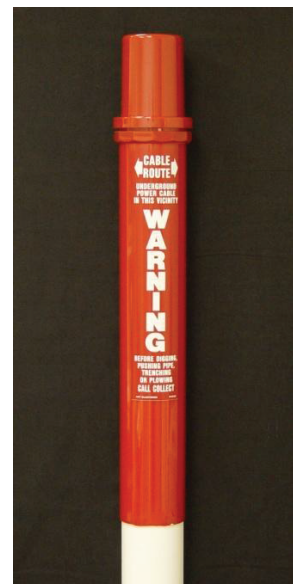
Recommended for use in areas with lower impact rate

Standard lengths: 66", 72", 78"

Post Color Options: (00) White, (02) Yellow, (03) Orange

Enhancer & Test Station Color Options: (00) White, (02) Yellow, (03) Orange, (04) Red, (05) Blue, (06) Green

10 PIECES PER CASE

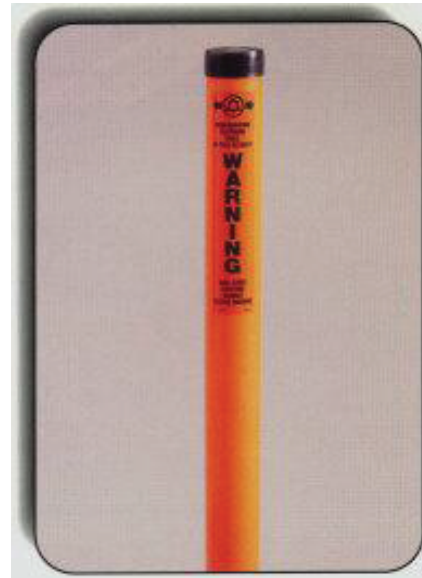


## ROUNDMARK UTILITY MARKER

3.5" HDPE Post with a black cap  
Comes standard with 2 custom decals and plastic T anchor  
Allows for 360° visibility by adding a 3<sup>rd</sup> decal to post  
Recommended for use in areas with lower impact rate

Standard lengths: 66", 72, 78"  
Post Color Options: (00) White, (02) Yellow, (03) Orange

10 PIECES PER CASE



## ROUNDMARK TEST STATION

5 Terminal Test Station with matching cap made of HDPE  
Comes standard with 2 custom decals and plastic T anchor  
Allows for 360° visibility by adding a 3<sup>rd</sup> decal to enhancer  
Recommended for use in areas with lower impact rate

Standard lengths: 66", 72, 78"  
Post Color Options: (00) White, (02) Yellow, (03) Orange  
Test Station Color Options: (00) White, (02) Yellow, (03) Orange, (04) Red, (05) Blue, (06) Green

10 PIECES PER CASE





## ROUNDMARK CATHODIC TEST STATION

3.5" HDPE Post with a black cap and two copper test points on the face of the post

Comes standard with 2 custom decals & 1 standard cathodic protection test station decal (B238ETS) and plastic T anchor

Allows for 360° visibility by adding a 3<sup>rd</sup> decal to post

Recommended for use in areas with lower impact rate

Standard lengths: 66", 72", 78"

Color Options: (00) White, (02) Yellow, (03) Orange

10 PIECES PER CASE

